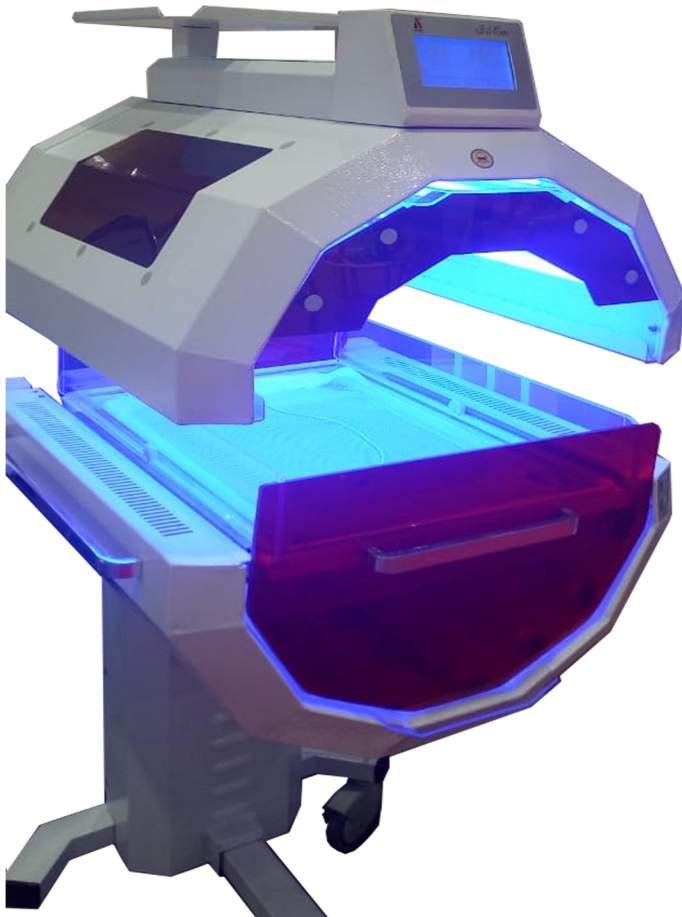


# AGC



**AGC**  
For  
Technological  
Industries



- Touch screen
- 16 LED Lamps (blue)
- LED Lamp life time is 30000 hours
- Air Temperature Sensor
- Skin Temperature Sensor
- Wheels with brakes
- Top unit can be move up and down
- Bilisphere Body is made from Aluminium

**BiliCare**  
Intensive  
Phototherapy

Office : 17 Ali Youssef st. Elqasr Alainy-Cairo, Egypt

Factory : Alex-New Borg Alarab-2nd Industrial Zone-Block 18

[info@agcfactory.com](mailto:info@agcfactory.com)

[sales@agcfactory.com](mailto:sales@agcfactory.com)

+201007700679

+201141199418

[www.agcfactory.com](http://www.agcfactory.com)

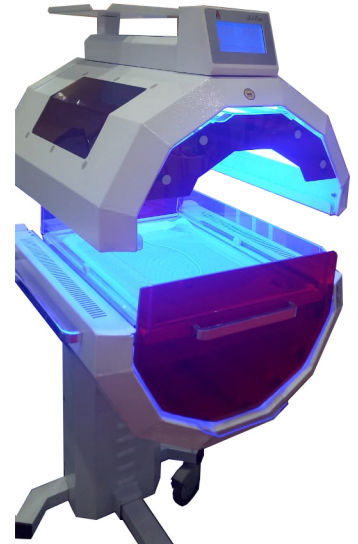


# AGC

## AGC For Technological Industries

### Characteristics

Air Temp. Display	0 OC-51 OC
Skin Temp. Display	0 OC-51 OC
Noise Level	<55 dBA
Screen	5.1 inches touch screen
Lamp Life time	30000 Hours
Intensity	120 $\mu\text{w}/\text{cm}^2/\text{nm}$
Spectral Irradiance	420-480 nm
Monitor Shelf Weight Limit	6 kg
Supply Voltage	220 VAC, 50-60 Hz
language selection on LCD display	English, Turkish, French
Upper and lower lamps can be operated together or separately.	



### Easy to clean

Manual elevation system which elevates upper Part just on a push of a button for cleaning and disinfection of the inside of the equipment. Hammock Exchange is an easy process.



### Low cost

BiliCare, uses LED lamps that have 30000 hours of life time. This lifetime value is 15 times longer than any conventional fluorescent lamp available in the market, which reduces lamp replacement cost extremely. LED lamps have very low energy consumptions compared to fluorescents.

### Less workload

Treatment time of each patient is definitely shorter than any other phototherapy equipment. Short treatment time means less workload for caregivers per patient. Intensive phototherapy system hospital stay. Sliding out bed unit allows caregivers and nursing staff easy access to the infant. Side windows protect other patients and caregivers from the effect of blue light and caregivers can supervise the neonate through side windows.



# AGC

## AGC For Technological Industries

### Features

- Touch screen
- 16 LED Lamps (blue)
- LED Lamp life time is 30000 hours
- Air Temperature Sensor
- Skin Temperature Sensor
- Wheels with brakes
- Top unit can be move up and down
- Bilisphere Body is made from Aluminium

